

# Nimbus Control Room Monitor

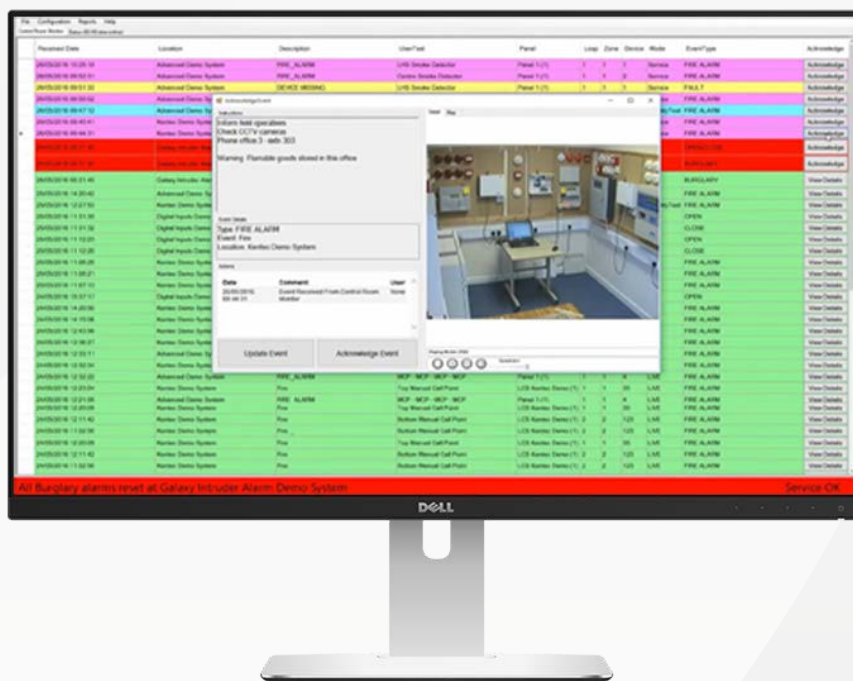


Nimbus Control Room Monitor (CRM) is a remote alarm monitoring application that receives, displays and consolidates log events from multiple Nimbus-connected systems. These systems can include fire alarm, CCTV and intruder systems, in addition to other digital inputs.

Alarms and Events are monitored remotely and presented to the operator in scales of priority. CRM events can be customised to present the operator with site specific and operational instructions.

Control Room Monitor is typically deployed on a dedicated PC in a central office providing ready access to all fire alarm events on a single screen.

Nimbus events are presented to screen and flagged according to their priority level.



For further information or a demo call +44 115 924 9537 or check out our website [nimbusdigital.com](http://nimbusdigital.com)